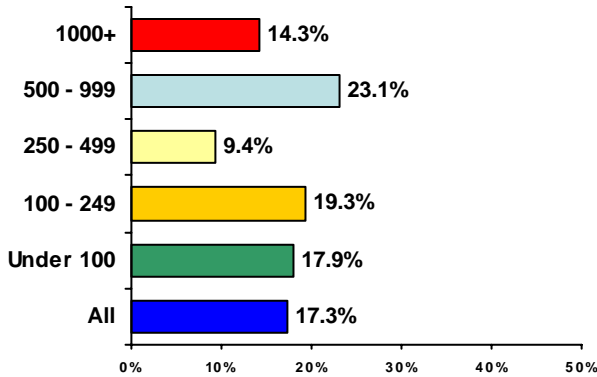


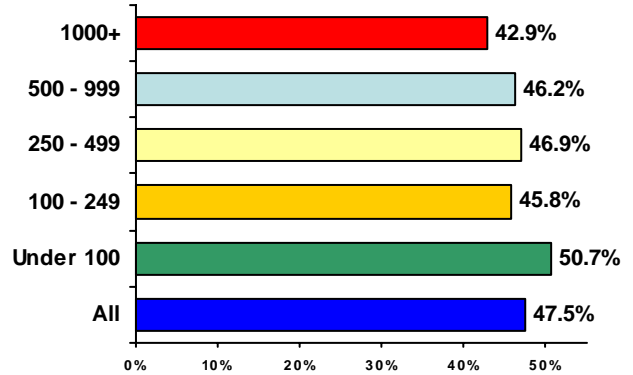
12. Which of the following emerging strategies do you think will be temporary and which will be adopted as standard by most law firms going forward?

Fewer equity partners

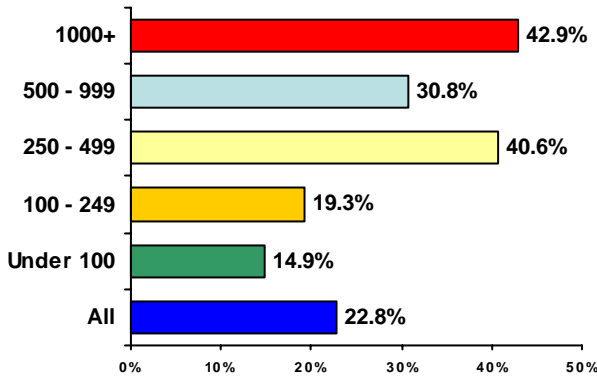
Fewer equity partners – TEMPORARY



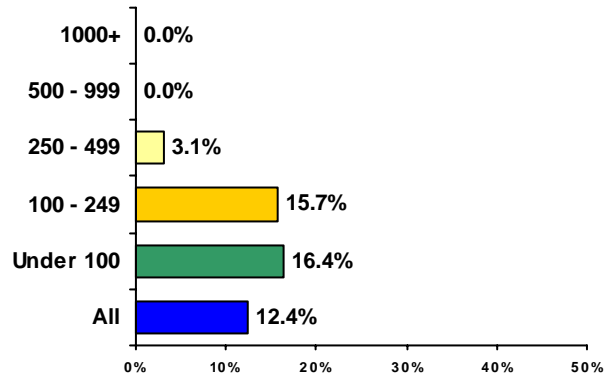
Fewer equity partners – MAY BE PERMANENT



Fewer equity partners – PERMANENT



Fewer equity partners – NOT SURE



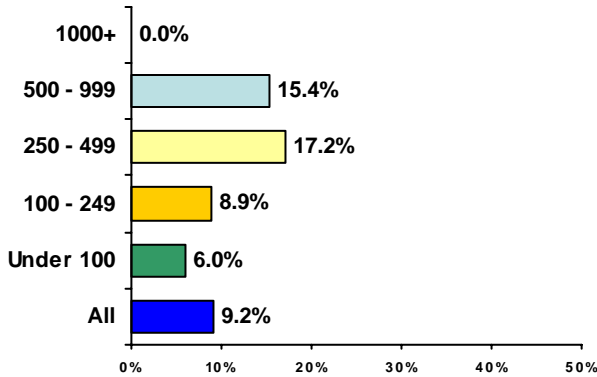
Law firm size categories and color key

- 1,000 lawyers or more
- 500 - 999 lawyers
- 250 - 499 lawyers
- 100 - 249 lawyers
- Under 100 lawyers
- All lawyers

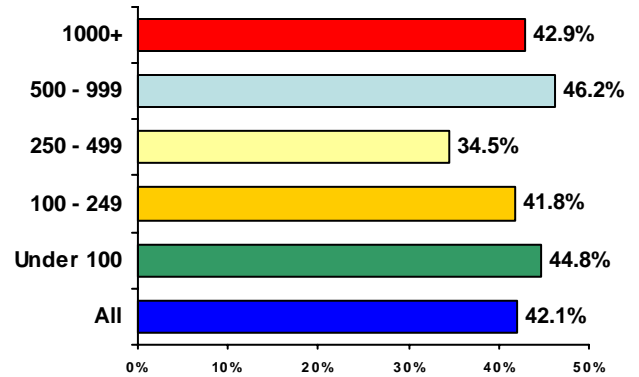
12. Which of the following emerging strategies do you think will be temporary and which will be adopted as standard by most law firms going forward?

More non-equity partners

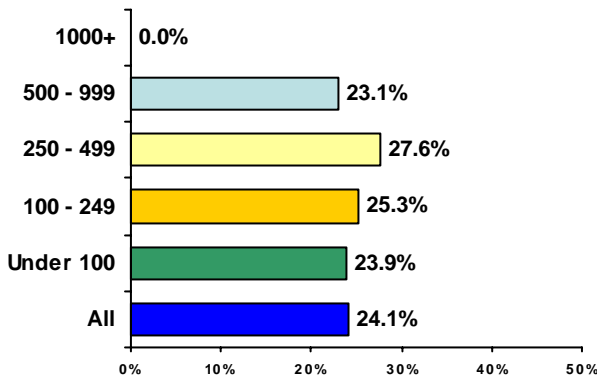
More non-equity partners – TEMPORARY



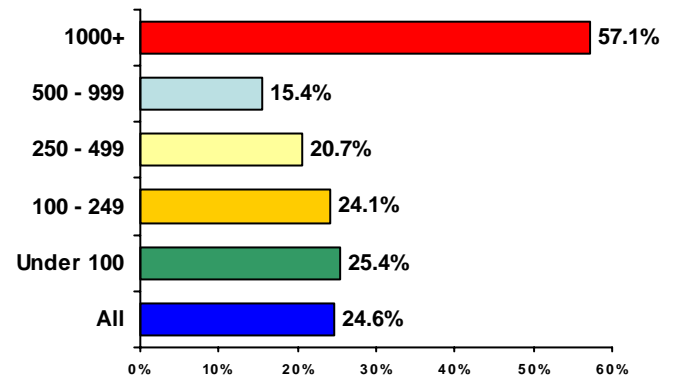
More non-equity partners – MAY BE PERMANENT



More non-equity partners – PERMANENT



More non-equity partners – NOT SURE



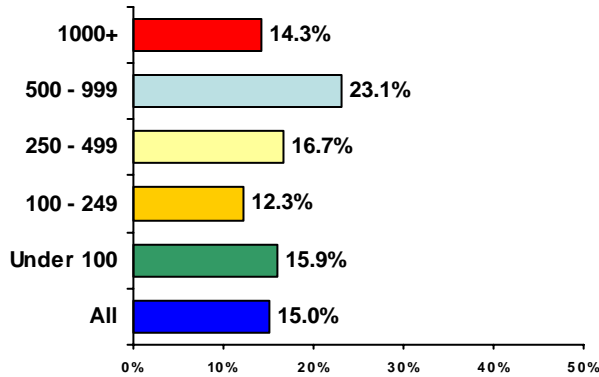
Law firm size categories and color key

- 1,000 lawyers or more
- 500 - 999 lawyers
- 250 - 499 lawyers
- 100 - 249 lawyers
- Under 100 lawyers
- All lawyers

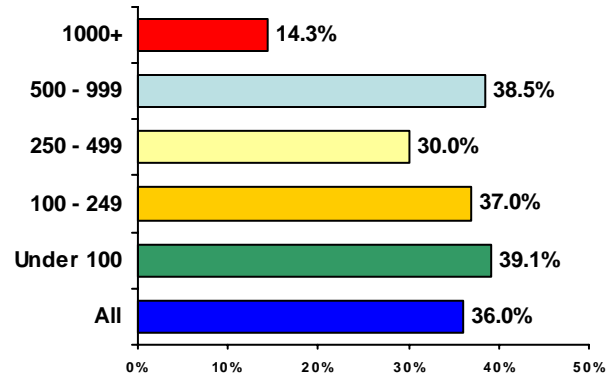
12. Which of the following emerging strategies do you think will be temporary and which will be adopted as standard by most law firms going forward?

Longer partner track

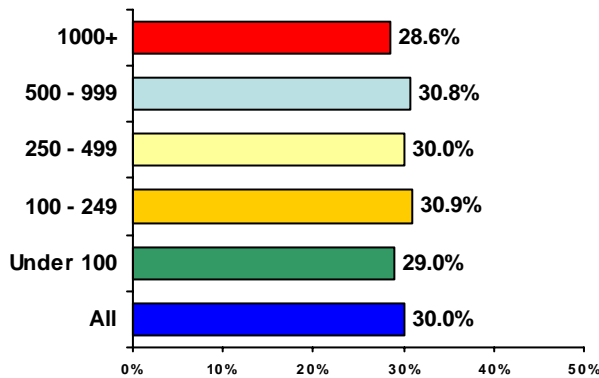
Longer partner track – TEMPORARY



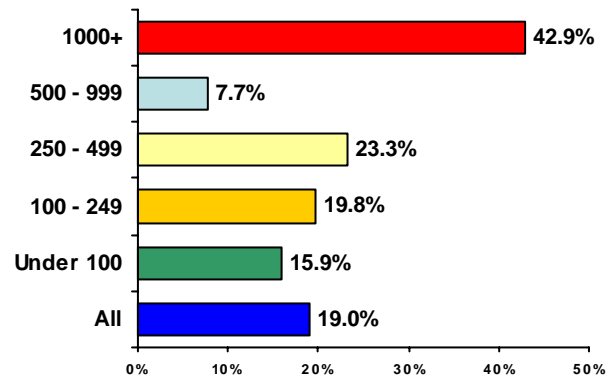
Longer partner track – MAY BE PERMANENT



Longer partner track – PERMANENT



Longer partner track – NOT SURE



Law firm size categories and color key

- 1,000 lawyers or more
- 500 - 999 lawyers
- 250 - 499 lawyers
- 100 - 249 lawyers
- Under 100 lawyers
- All lawyers

In March and April 2009, Altman Weil surveyed Managing Partners and Chairs at 687 law firms with 50 or more lawyers¹. We received responses from 208 firms for a 30.3% response rate.

Firm Size	All US Law Firms	Survey Participants	% Response
1,000 +	20	7	35%
500 – 999	63	14	22%
250 – 499	86	32	37%
100 – 249	251	84	33%
50 – 100	267	71²	27%
All	687	208	30%

The respondent group includes:

- 32% of 2008 NLJ 250 law firms
- 23% of 2008 AmLaw 200 law firms

¹ The exact number of lawyers in a law firm changes frequently. The universe of law firms surveyed is based on published directories and league tables available in spring 2009. Survey participants reported their own headcounts

² Seven firms invited to participate in the 50-100 lawyer category reported their size as under 50 at the time of the survey. We have included their responses in the small law firm category.